

## Software for the classification and traceability of waste

### MAIN OPERATIONAL CHARACTERISTICS

#### SOFTWARE

- WIN CE operating system with an intuitive graphical interface
- TCP/IP communication protocol
- VNC connection for remote assistance
- Email/FTP service for generating receipts in PDF format reports and export/import of archives in CSV format; Log file.

#### HARDWARE

- Colour touch screen
- Indicator in ABS or stainless steel with degree of protection up to IP68/69K
- USB ports:
  - 2 for DD1010 indicator
  - 4 for DD1050 indicator
- Ethernet port
- 2 serial ports
- SD card reader
- I/O expansion cards for managing outputs and inputs



Example of printed ticket



In order to improve its production from a technological standpoint, the company reserves the right to make changes to the products referred to in the preceding photographs at any time and without prior notice - 81190499/A - 1098 - netstudio



## Easy, fast and precise traceability!

Waste Diade is a weighing software for a **simple and complete classification of waste for statistical or administrative purposes.**

The indicator features a **touch screen**, thereby guaranteeing simple use even for non-specialised operators, guiding them through the weighing process.

It is possible to speed up operations by using **optical scanners** to scan the type of container or waste to be tracked.

All the archive data, as well as those obtained from the weighing operations, can be stored in the device's own local database or in a **SQL Server** database installed on a server or PC on the same Ethernet network as the indicator, making the data available to other programs, like an ERP.

The indicator is equipped with software developed in **WIN CE** that, when configured, allows you to receive **remote assistance** through commonly used digital **devices** that can access the same network (PC, Smartphone, tablet, etc.).



### EASY AND COMPLETE TRACEABILITY

For each operation it is possible to record:

- LOCATION/STATION
- DEPARTMENT
- WASTE TYPE
- CONTAINER AND QUANTITY



### EASY REMOTE CONTROL

The indicator quickly provides its system information for support and makes it possible to connect to remote technical assistance using a **VNC** connection.

### AVAILABLE CONFIGURATIONS

It is possible to choose the weighing indicator from different solutions in **ABS** or **stainless steel**



Possibility to label each bin or assign an electronic ID



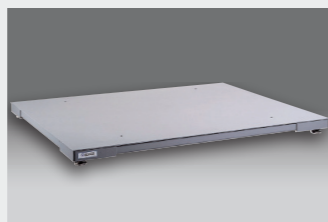
The bin is weighed on a weighing platform selected from the extensive CB range



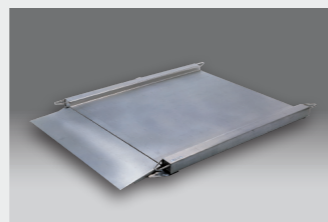
DD1050  
DIADE series weighing indicator



DD1010  
Weighing indicator with STB Q3 printer



PRM-CX  
Weighing platform for particularly harsh environments and conditions of heavy use



LPS\_CX  
Weighing platform for industrial and commercial applications

### CLEAR PRESENTATION OF DATA EASY IMPORT AND EXPORT

The weighing data stored in the database can be **exported** in **CSV** format either manually with a USB flash drive or automatically via **FTP Protocol**.

All data archives (waste type/container etc.) can be exported or imported in CSV format via USB flash drive

ID	ID Indicator	Date and time	Counter	Closing date	Station	Description	Dept	Description	Waste	Description	Container	Description	Weight	Qty	Gross	Tare	Net	UM	Scale	Gross	Tare	Net
40	123456789	30/10/2017 15.50.11	40	30/10/2017 16.50.11	1	PLANT OF CAMPOGALLIANO	R02	INJECTION MOULD	CER1	GLASS	100	GREEN BIN	3	1	20,980 kg	0,000 kg	20,980 kg	kg	A	20,98	3	17,98
41	123456789	30/10/2017 15.51.25	41	30/10/2017 17.51.25	1	PLANT OF CAMPOGALLIANO	R04	INJECTION MOULD	CER3	BATTERIES	500	RED BID	5	1	23,060 kg	5,000 kg	18,060 kg	kg	A	23,06	5	18,06
42	123456789	30/10/2017 15.52.17	42	30/10/2017 16.52.17	4	PLANT OF FLORENCE	R02	INJECTION MOULD	CER2	ORGANIC	300	BROWN BIN	4	1	26,180 kg	4,000 kg	22,180 kg	kg	A	26,18	4	22,18
43	123456789	30/10/2017 15.53.30	43	30/10/2017 15.59.30	4	PLANT OF FLORENCE	R03	ESTRUSIONE M. PLAST.	CER6	PLASTIC	800	YELLOW BIN	3	2	17,920 kg	6,000 kg	11,920 kg	kg	A	17,92	6	11,92
44	123456789	30/10/2017 15.54.23	44	30/10/2017 16.45.23	2	PLANT OF TURIN	R02	INJECTION MOULD	CER6	PLASTIC	800	YELLOW BIN	3	1	19,980 kg	3,000 kg	16,980 kg	kg	A	19,98	3	16,98
45	123456789	30/10/2017 15.55.07	45	30/10/2017 17.35.07	4	PLANT OF FLORENCE	R05	PACKAGING	CER4	PAPER AND CARDBOARD	200	BIDONE BLU	4	1	17,220 kg	4,000 kg	13,220 kg	kg	A	17,22	4	13,22
46	123456789	30/10/2017 15.56.15	46	30/10/2017 18.40.15	1	PLANT OF CAMPOGALLIANO	R03	PLAST. EXTRUSIONE M.	CER6	PLASTIC	800	YELLOW BIN	3	1	19,580 kg	3,000 kg	16,580 kg	kg	A	19,58	3	16,58
47	123456789	30/10/2017 15.56.58	47	30/10/2017 19.53.58	5	PLANT OF ROME	R04	INJECTION MOULD	CER3	BATTERIES	500	RED BIN	5	1	9,020 kg	5,000 kg	4,020 kg	kg	A	9,02	5	4,02
48	123456789	30/10/2017 15.57.50	48	30/10/2017 16.21.50	3	PLANT OF MILAN	R05	PACKAGING	CER4	PAPER AND CARDBOARD	200	BLU BIN	4	1	24,240 kg	4,000 kg	20,240 kg	kg	A	24,24	4	20,24
49	123456789	30/10/2017 15.58.49	49	30/10/2017 17.28.49	1	PLANT OF CAMPOGALLIANO	R04	INJECTION MOULD	CER2	ORGANIC	300	BROWN BIN	4	1	22,440 kg	4,000 kg	18,440 kg	kg	A	22,44	4	18,44
50	123456789	30/10/2017 15.59.36	50	30/10/2017 16.03.36	2	PLANT OF TURIN	R04	INJECTION MOULD	CER2	BATTERIES	500	RED BIN	5	2	24,960 kg	10,000 kg	14,960 kg	kg	A	24,96	10	14,96
51	123456789	30/10/2017 16.07.23	51	30/10/2017 16.21.23	3	PLANT OF MILAN	R06	ELECTRONIC	CER3	BATTERIES	500	RED BIN	5	1	28,820 kg	5,000 kg	23,820 kg	kg	A	28,82	5	23,82

### DETAILED REPORTS AND STATISTICS

With Waste Diade you can get Reports by:

- LOCATION/STATION
- DEPARTMENT
- WASTE
- CONTAINER
- NO. CONTAINERS



### EASY SENDING OF ACQUIRED DATA VIA EMAIL/FTP

Through the weighing indicator it is possible to generate a ticket in PDF format and send the weighing data in PDF/CSV format via email or FTP protocol.

It is also possible to automatically export or send log files by email to report any warnings or malfunctions.

